



KEY PLAN

SITE ID: SOUTH SUMAS ROAD AND FAIRWAY STREET - WIDE LOAD TRANSPORT TRAFFIC CONTROL PLAN		50
CATEGORY 1 - FAIRWAY ST	POSTED SPEED, km/h	50
ANTICIPATED AADT, VEH / DAY (2022)	<1000	NA
ANTICIPATED SADT, VEH / DAY (2019)		
NOTE: TRAFFIC DATA ESTIMATED FROM TAC GEOMETRIC DESIGN GUIDE FOR CANADIAN ROADS		
TCP NUMBER	01-13283-S6-M002-HS-PLN-0441	
DURATION OF WORK	LONG	
RISK ASSESSMENT REVISION	SEE APPENDIX F	
OVERLAPPING STRATEGY DOCUMENT	OVERLAPPING WORK ZONE PROCEDURE DOCUMENT (01-13283-SG-M002-GN4-PRO-0001 R0)	

DYNAMIC MESSAGE SIGN SEQUENCE*			
CYCLE 1		CYCLE 2	
PHASE 1 (3 SEC)	CONSTRUCTION	PHASE 1 (3 SEC)	PREPARE
PHASE 2 (3 SEC)	TO STOP	PHASE 2 (3 SEC)	TO STOP
>REPEAT		>REPEAT	
ZONE AHEAD	STOP	ZONE AHEAD	STOP

\* PDMS MESSAGE MAY BE MODIFIED PER SITE CONDITIONS

SEAL:	
PERMIT TO PRACTICE	WATT CONSULTING GROUP LTD
SIGNATURE	
DATE	
PERMIT NUMBER: 1001432	ENGINEERS & GEOSCIENTISTS
	BRITISH COLUMBIA

GENERAL NOTES:

- PIPELINE AND ACCESS LOCATIONS TO BE CONFIRMED ON SITE BY THE CONTRACTOR. TRAFFIC CONTROL MEASURES SHALL BE LAID OUT FROM THE EDGE OF THE ACCESS.
- ALL SIGNS SHALL MEET BC MINISTRY OF TRANSPORTATION AND INFRASTRUCTURE (BC MOTI) SPECIFICATIONS FOR STANDARD HIGHWAY SIGN MATERIALS. FABRICATION, SUPPLY, INSTALLATION AND MAINTENANCE CONTRACTOR IS TO NOTIFY THE TRAFFIC ENGINEER IF TRAFFIC CONTROL MEASURES OVERLAP WITH ADJACENT ACCESS MANAGEMENT PLAN.
- CONTRACTOR TO COVER ALL EXISTING CONFLICTING REGULATORY SIGNS WHEN THIS TRAFFIC CONTROL LAYOUT IS IMPLEMENTED AND ACTIVE.
- CONTRACTOR TO PLACE SIGNS SUCH THAT DRIVEWAY ACCESSES AND ROAD CROSSINGS ARE NOT IMPACTED.
- FOR CONSTRUCTION TIMING AND DURATION, REFER TO THE PERMIT OF THIS LOCATION. THE KEY WORK ACTIVITIES WILL INCLUDE, BUT NOT LIMITED TO: EQUIPMENT MOBILIZATION, MATERIAL STAGING, PIPELINE AND PUMP STATION CONSTRUCTION AND EQUIPMENT DEMOBILIZATION. REFER TO THE TRAFFIC AND ACCESS CONTROL MANAGEMENT PLAN (TACMP) FOR GENERAL RESTRICTIONS, SPECIAL EVENTS, AND OTHER CONDITIONS ASSOCIATED WITH EACH SITE.
- THE CONSTRUCTION TRAFFIC WILL COMPOSE OF TRUCKS HAULING EQUIPMENT AND MATERIALS AS WELL AS CREW TRANSPORT TO ACCESS TO/FROM THE WORKS. THE ESTIMATED VOLUME (REFER TO PERMIT) MAY RESULT IN MINOR REDUCTION OF SPEED UP TO 30km/h, AND/OR TEMPORARY STOPPING WITH AVERAGE DELAY LESS THAN 5 MINUTES, AND NO LONGER THAN 15 MINUTES.
- THE SPEED USED FOR THE TRAFFIC CONTROL MEASURES IS AS PROVIDED BY THE CONTRACTOR. CONTRACTOR TO CONFIRM ON SITE.
- IN TIMES OF MINIMAL ACTIVITY AT ANY PERMANENT ACCESS, ADVANCE WARNING TRUCK TURNING (W-377) SIGNS AND OTHER SUPPLEMENTAL SIGNS AS REQUIRED BY THE MINISTRY REPRESENTATIVE ARE TO BE ERCTED ON EITHER SIDE OF THE ACCESS IN ACCORDANCE WITH THE LATEST VERSION OF THE MINISTRY OF TRANSPORTATION AND INFRASTRUCTURE MANUAL OF STANDARD TRAFFIC SIGNS AND PAVEMENT MARKINGS, AND IN COMPLIANCE WITH ACCESS MANAGEMENT PLANS SPECIFIC TO EACH LOCATION, AS ACCEPTED BY THE MINISTRY.
- IN TIMES OF MINIMAL ACTIVITY AT ANY TEMPORARY ACCESS, ADVANCE CONSTRUCTION TRUCK TURNING (W-172) SIGNS AND OTHER SUPPLEMENTAL SIGNS AS REQUIRED BY THE DESIGNATED DISTRICT OFFICIAL ARE TO BE ERCTED ON EITHER SIDE OF THE ACCESS IN ACCORDANCE WITH THE LATEST VERSION OF THE MINISTRY OF TRANSPORTATION AND INFRASTRUCTURE MANUAL OF STANDARD TRAFFIC SIGNS AND PAVEMENT MARKINGS, AND IN COMPLIANCE WITH ACCESS MANAGEMENT PLANS SPECIFIC TO EACH LOCATION, AS ACCEPTED BY THE MINISTRY.
- CONTRACTOR IS RESPONSIBLE FOR PLACING CONSTRUCTION WARNING SIGNS (C018-1A, C-029) ALONG ALL SIDE STREET APPROACHES WITHIN THE CONSTRUCTION SIGNAGE LIMITS OF THE ACCESS, AS NEEDED.
- THIS TRAFFIC CONTROL SETUP IS TO BE USED DURING DAYLIGHT HOURS. FOR NIGHT OPERATIONS OR TRAFFIC CONTROL SETUP IN THE HOURS OF DARKNESS AS PER THE APPROVED PERMIT/H1080. THE FOLLOWING IS REQUIRED TO CONFORM WITH THE MINISTRY'S REQUIREMENTS PER THE BC MOTI TRAFFIC MANAGEMENT MANUAL FOR WORK ON ROADWAY'S (TMM):
  - OVERHEAD LIGHTING SHALL BE USED TO ILLUMINATE THE WORK ACTIVITY AREA, EQUIPMENT CROSSINGS, AND OTHER POTENTIALLY HAZARDOUS AREAS.
  - TCP APPAREL AND EQUIPMENT SHALL COMPLY WITH THE TMM REQUIREMENTS (INCLUDING ILLUMINATED BATONS).
  - TMM RETROREFLECTIVE STANDARDS AND INSPECTION REQUIREMENTS FOR ALL TRAFFIC CONTROL DEVICES MUST BE MET.
  - ALL THE DETAILS AND PROCEDURES ASSOCIATED WITH AUTOMATED FLAGGER ASSISTED DEVICE (AFAD) SHALL BE COMPLIANT WITH SECTION 407 OF THE TMM 2020.
  - THE AFAD SHALL BE ILLUMINATED WITH OVERHEAD LIGHTING AS PER TMM SECTION 47.2 AND 7.9.
  - CONTRACTOR TO RESTORE THE ROAD TO ORIGINAL CONDITION AFTER PIPELINE CONSTRUCTION.
  - APPENDIX F OF TRAFFIC CONTROL PLAN DETAILS: A) RISK ASSESSMENT; B) AFAD (AUTOMATED FLAGGER ASSISTED DEVICE) AND TCP REQUIREMENTS AND OPERATIONS PER WORKSAFE BC PART 18 (OHSR); C) THE ENVIRONMENTAL TRAFFIC RISKS SPECIFIC TO THIS SITE; D) SITE DISTANCE SPECIFIC TO THE SITE; E) DISTANCE UNDER DRIVER SIGHT DISTANCES; 2.1) SITE FACTORS (RISK ASSESSMENT) AND IN APPENDIX F.
  - THERE WILL NOT BE ANY STORAGE OF MATERIALS WITHIN THE ROADWAY IN THE CLEAR ZONE (UNLESS APPROVED BY EOR) THAT IMPEDE THE SIGHT LINES AT THE ACCESS POINT.
  - WHEN TWO OR MORE ACTIVE ACCESS POINTS ARE IN CLOSE PROXIMITY TO EACH OTHER, THE SIGN SET UP AND TRAFFIC CONTROL WILL COMPLY WITH OVERLAPPING TRAFFIC CONTROL STRATEGY AS PER SECTION 2.3 WORK ZONES IN CLOSE PROXIMITY IDENTIFIED.
  - THE CONTENT OF THIS DRAWING REPRESENTS INFORMATION GATHERED AT THE TIME OF ITS DEVELOPMENT. THE WORK ZONE WILL BE REVIEWED AT THE TIME OF IMPLEMENTATION AND, IF THERE ARE SIGNIFICANT CHANGES OR ITEMS NOT CONSIDERED PROPERLY, THE DRAWING AND THE HAZARD ASSESSMENT WILL BE UPDATED ACCORDINGLY.

LIST OF DRAWINGS	
NO.	TITLE
S SUMAS-FAIRWAY_P1	TRAFFIC CONTROL LAYOUT PLAN COVER SHEET
S SUMAS-FAIRWAY_P2	TRAFFIC CONTROL LAYOUT PLAN

TITLE: TRAFFIC CONTROL LAYOUT  
S SUMAS RD/FAIRWAY ST - WIDE LOAD TRANSPORT  
BPLP TMEP SPREAD 6B

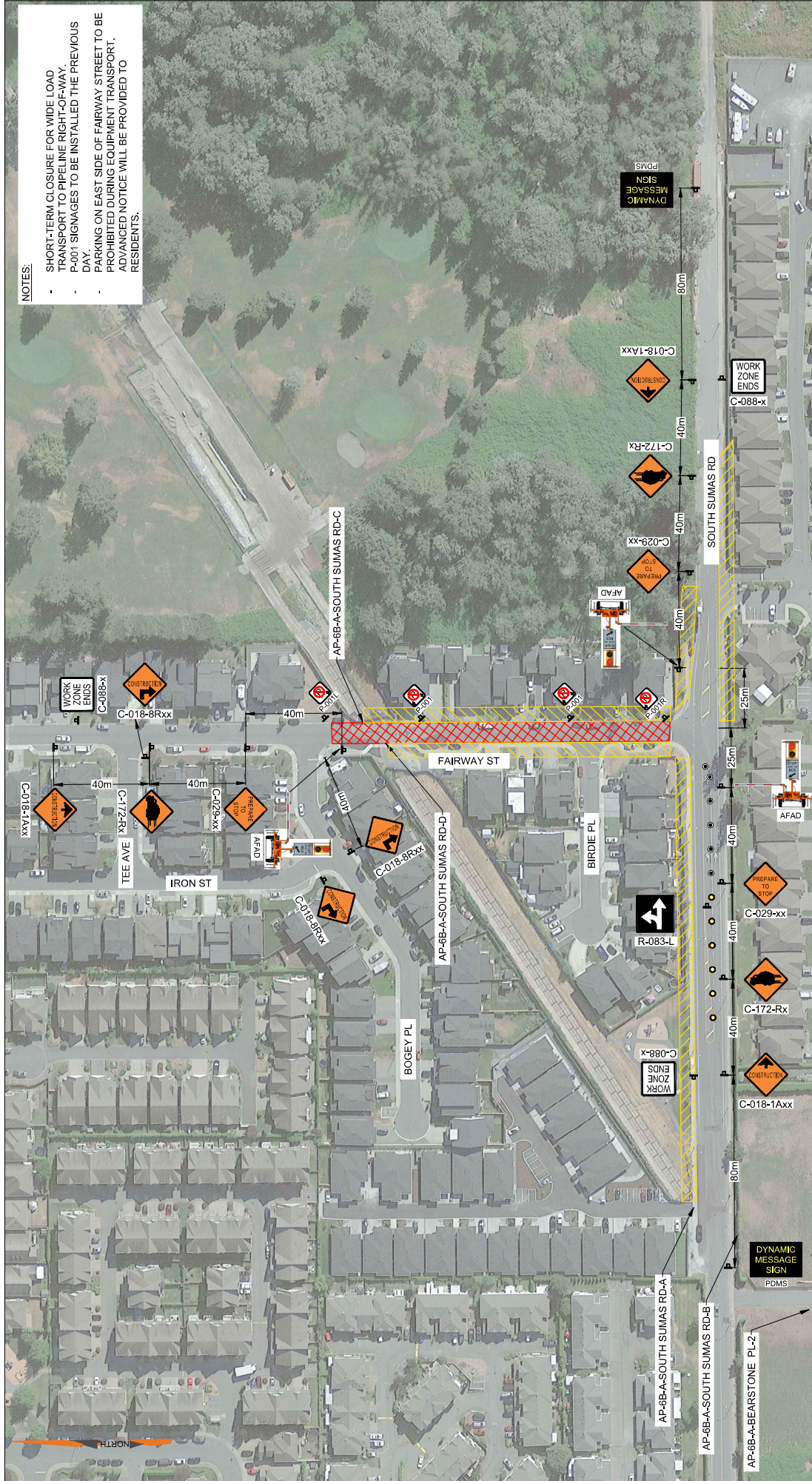
Calgary, Edmonton, Lloydminster,  
Okanagan, Vancouver, Victoria  
WATT CONSULTING GROUP.COM

Consulting Group

REVISIONS		SCALE:		NOT TO SCALE	
0	ISSUED FOR IMPLEMENTATION	2025-07-27	DESIGNED:	CHECKED:	APPROVED:
1	ISSUED FOR IMPLEMENTATION	2023-09-02	KM	NK	NK
2			DESIGN VELOCITY:		
3			50 km/h		
4			PROJECT NO:		
5			3431.B01		
6			DATE:		
7			2023-07-27		
8					1

**NOTES:**

- SHORT-TERM CLOSURE FOR WIDE LOAD TRANSPORT TO PIPELINE RIGHT-OF-WAY.
- P-001 SIGNAGES TO BE INSTALLED THE PREVIOUS DAY.
- PARKING ON EAST SIDE OF FAIRWAY STREET TO BE PROHIBITED DURING EQUIPMENT TRANSPORT. ADVANCED NOTICE WILL BE PROVIDED TO RESIDENTS.



**LEGEND:**

- SIGN MARKER
- FLEXIBLE DRUM
- TUBULAR MARKER
- BARRICADE
- WORK ZONE
- AUTOMATED FLAGGER
- ASSISTANCE DEVICE (AFAD)
- TCF CONTROL LOCATION

**SEAL:**

**PERMIT TO PRACTICE**  
**WATT CONSULTING GROUP LTD**  
 SIGNATURE \_\_\_\_\_  
 DATE \_\_\_\_\_  
**PERMIT NUMBER: 1001432**  
 ENGINEERS & GEOSCIENTISTS  
 BRITISH COLUMBIA

REVISIONS	
0	ISSUED FOR IMPLEMENTATION
1	ISSUED FOR IMPLEMENTATION
2	
3	
4	
5	
6	
7	
8	

DESIGNED:	DRAWN:	CHECKED:	APPROVED:
KM	KM	NK	NK
DESIGN SPEED:	DESIGN VEHICLE:	PROJECT NO.:	DRAWING NO.:
50 km/h		3431.B01	S SUMAS-FAIRWAY_P2
DATE:	REVISION:		
2023-07-27	1		

**TITLE:**  
**S SUMAS RD/FAIRWAY ST - WIDE LOAD TRANSPORT**  
**BPLP TMEP SPREAD 6B**

**WATT**  
 Consulting Group  
 Calgary, Edmonton, Lloydminster,  
 Okanagan, Vancouver, Victoria  
**WATTCONSULTINGGROUP.COM**